



POWER WAY

For complete MEP solution



POWER WAY

ELECTRO MECHANICAL CONTRACTING



INDEX

- ▶ **VISION**
- ▶ **MISSION**
- ▶ **DEPARTMENTS**
- ▶ **QUALITY ASSURANCE & QUALITY CONTROL**
- ▶ **SAFETY & HEALTH POLICY**
- ▶ **STANDARDS**
- ▶ **CONTACTS**
- ▶ **PROJECT REFERENCE LIST**
- ▶ **LICENSES AND APPROVALS**

About us

As a well-established MEP contracting company in Ras Al Khaimah, we offer complete MEP solutions starting from design to supply & installation, testing and commissioning for a wide spectrum applications which includes all kinds of Electrical, Low Current, Water Supply, Drainage, Air Conditioning (HVAC), Refrigeration, Lightening Protection System, Cold Room, Chemical Pipeline, Compressed Air Pipeline System and Drainage HVAC & Refrigeration Systems and Piping Systems for Chemicals for Industrial Projects, Commercial & Residential Building, Hospitals, High Rise Towers, Landscaping and Street Lighting Projects, as per the standards of U.A.E authorities.

Vision

We strive to become one of the most reliable MEP contracting companies in the Middle East, continuously conforming to our ever-growing professional and ethical demeanor as well as quality assurance standard to earn the privilege of being your contractor of choice.

POWERWAY is committed to:

1. Deliver 100% client satisfaction by providing state of the art yet viable & cost effective solutions and implementing those solutions through superior quality workmanship
2. Ensure that amidst all undertaken projects there exists a great deal of passion and commitment to provide quality services and on time completion to deliver client satisfaction.
3. Provide an open and flexible approach towards the needs of our clients by considering their views & comments and thus providing a better solution
4. Maintain professional leadership in project management capability.

Mission

Guided by our vision we shall deliver high quality, cost effective jobs on time and enhance our client's satisfaction through continuous improvement of our business practices in terms of safety, quality, services, delivery as well as environmental protection.

Major Departments in Engineering & Design

Electrical Division

Design, supply, installation, testing and commissioning of:

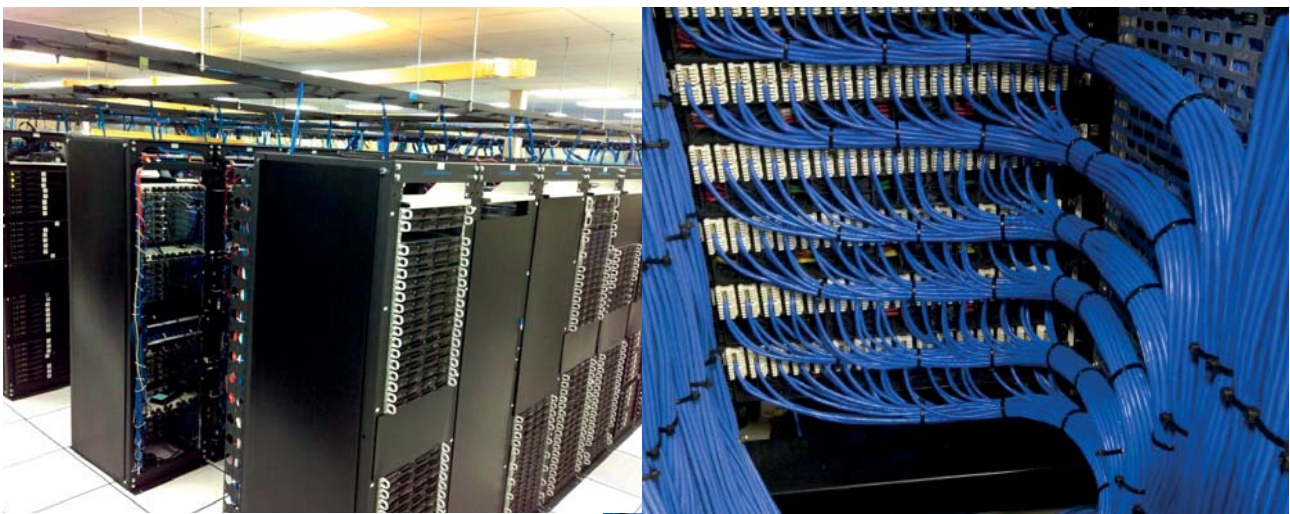
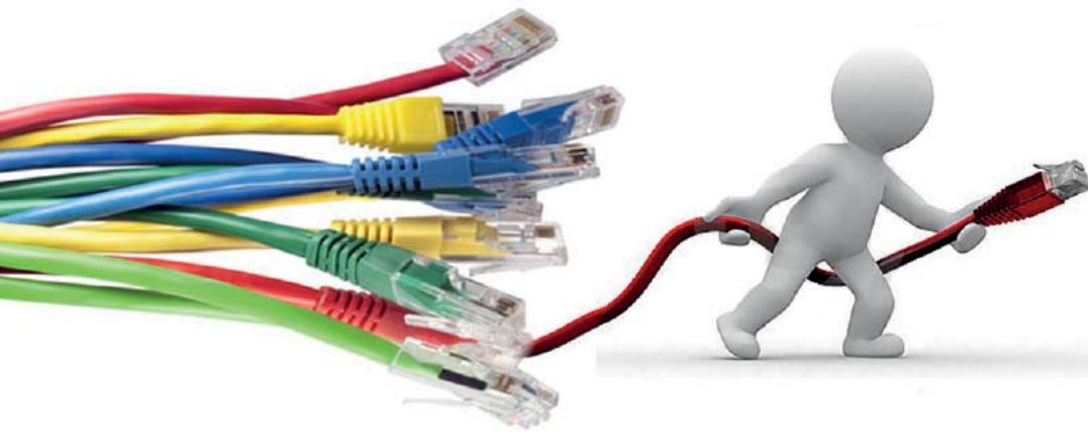
- All kinds of industrial and commercial electrical requirements which includes machine erections, HV/LV cable laying, feeder pillars, power & distribution transformers, isolation transformers, RMU, HV/LV panels, ATS panels, PFC capacitor bank, VFD panels, motor/pump control panels, lighting control panels, Isolator panels, GI/PVC conduits for low current systems, lighting and power points wiring, two and three rows cable laying etc.
- Cable trunking, cable trays, cable ladder, lighting bus bar systems and power bus bar systems.
- Industrial machinery power & control wiring such as cement, medicine, block and glass



manufacture, machineries and all kind of industrial machineries

- Lightning protection system and aircraft warning lights system.
- Light fixtures, switches & sockets and all kinds of related jobs.
- Safety & automation systems which includes CCTV, access control, gate barrier, structured cabling, lighting control, home automation, intercom, SMATV/MATV, PABGM, etc.





- Fire alarm & fire fighting, central emergency systems and UPS.
- Earthing system in any type rock /sand with guarantee by using specialized chemicals.
- Solar energy system: Industrial and commercial purpose solar power system with battery charger, inverter, solar panels and all associated parts.



Plumbing and Drainage Division

Design, supply, installation, testing and commissioning of:

- Special Irrigation System for Controlled Environment Agriculture (Modern Farm).
- Industrial / commercial / residential drainage systems that include pipes, fittings, floor drains, cleanouts, rain water outlets, catchment basins and channel gratings, sewage and storm water lifting station, etc.
- Industrial / Domestic chilled / normal/ hot water systems that include water transfer & booster pumps, water tanks, water heaters (central and domestic), water filtration and water treatment systems, etc.
- Portable water and drainage systems.
- Water closets, hand wash basins, bidets, bath tubs, shower trays, jacuzzi, mixers, shower and all kinds of bath room accessories
- De-Salination Plant unit for Industrial and Commercial Purpose



Mechanical/HVAC Division

The complete installation, testing and commissioning of:

- All types of chillers, package units, split ducted units and VRV's.
- Domestic ducted, jet fans and specialized ventilation system
- Industrial exhaust fans/ducted exhaust systems for industries and commercial projects
- Chilled water piping systems
- PI and GI ducts in accordance with SMACNA / DW 142 / ASHRAE standard.
- Compressed air and vacuum piping systems.
- Specialized systems namely: Smoke management systems, staircase pressurization system.
- Ciller, Freezer, Blast Freezer Cold Rooms.
- For commercial store and industrial purpose.

The services also include Heat Load Calculation, selection of equipment and Energy Conservation in terms of savings in energy and cost. The installation team has been trained to take care of specific noise / vibration control measures prior to erection of any equipment viz: Chillers, Pumps, Air Handling Units, Fan Coil Units, Extract Fans, etc. Air balancing / water balancing prior to final testing and commissioning activities will be done in accordance with CIBSE.



Quality Assurance and Quality Control



Quality management plans are set forth and imposed on all undertaken projects. With our dedicated team of experts, we devise project specific quality measures ensuring customer satisfaction at all times and most importantly the project outcome. Not only do these plans ensure that the project requirements are met, but also that all stakeholders are satisfied with the project outcome.

SAFETY & HEALTH POLICY

The management of POWERWAY holds high regard for the safety, welfare and health of its employees. We strongly ensure that every employee is working under the safest possible conditions. All possible efforts will be made to prevent accidents in all our worksites, workshops and projects. We believe that it is a good practice to guard against accidents and occupational diseases as preventing accidents will reduce the associated costs and increase the morale of the employees, which is an intangible benefit to the organization.

All employees in our company are expected to perform their duties without compromising

the safety guidelines issued from time to time. Safety requirements will be an integral part of all our systems and it will be carefully planned and controlled in the day to day operation. Safety is primarily a line function and the safety personnel will work as catalyst / functional experts in advising the line staff to manage safety efficiently. They will audit the company's operations on a continuous basis to ensure whether the existing safety systems are adequate enough.

We have a responsibility not to endanger the environment due to our operation and will do our best to preserve it to the possible extent.

STANDARDS

Our Company adheres to the regulation and standards of following authorities:

- Federal Electricity and water Authority (FEWA)
- RAK Economics zone (RAK EZ)
- RAK Maritime City (RMC)
- Etisalat

Our Major Clients

SHORT LIST OF COMPLETED PROJECTS



ARCOMET FZC LLC

ARCOMET MAIN OFFICE
BUILDING COMPLETE
MEP WORK IN RAK
MARITIME CITY
(5MVA project+ 300 Ton HVAC)



PREMIUM TOBACCO FZ LLC

WARE HOUSE , FACTORY
1000KVA POWER + MACHINE CONTROL
LIGHTING INFRASTRUCTURE
600 TON HVAC PACKAGE UNITS

ADVANCED CONCRETE PRODUCTS

COMPLETE MEP WORKS FOR
2000KVA LOAD INCLUDING LIGHT



ARC INTERNATIONAL MIDDLE EAST LLC

MACHINE, POWER PANELS
CABLES AND CONTROLS



**EMIRATES NATIONAL
SCHOOL TRINITY
ENGINEERING**

STAFF ACCOMODATION BUILDING
ELECTRICAL
LOW CURRENT WORKS



SAVER GLASS

ELECTRICAL FOR BATCH PLANT
STORE, BOILER ROOM CHARGER
SOCKETS SOLAR SYSTEM ETC



RAK DENTAL COLLEGE

DENTAL CHAIR, LIBRARY
CONFERENCE ROOM ELECTRICAL
WORKS



RAK INTERNATIONAL AIRPORT

ARRIVAL TERMINAL
CONVEYOR ROOM POWER
NPA AREA STREET LIGHTS

SHORT LIST OF COMPLETED PROJECTS

النعيم
Al Na'eem Mall

AL NAEEM MALL

ELECTRICAL CABLE LAYING AND
POWER CONNECTION FOR RHEM
AL BAWADI, ELCHICO
YELLOW CHILLI, SPAR



THE FARMHOUSE

THE FARM HOUSE

COMPLETE MEP WORKS
FOR THE TOTAL FARM
CHILLER COLDROOM WORK


VESUVIUS
VESUVIUS

CONFERENCE ROOM ELECTRICAL
WORKS



JK Cement Works (FUJAIRAH) FZC
(A SUBSIDIARY OF J.K CEMENT LTD)

JKCEMENT WORKS

POWER NATURAL CABLE
AND LIGHTING



**PHARMAX
PHAMRCUETICALS – DUBAI**

POWER AND CONTROL CABLE
FOR ALL MACHINES



RAK PROPERTIES

MEP WORKS IN MINA AL ARAB
BUILDING 4,16,12, CHANGING ROOM
FACILITY BUILDING, TENNIS COURT ETC
BERMUDA VILLAS



DOUBLE TREE
BY HILTON™

**DOUBLE TREE HILTON
AL MARJAN ISLAND
AL ALI CONSTRUCTION**

LIGHTNING PROTECTION
SYSTEM WITH LATEST DLP SYSTEM



DABUR NATURELLE LLC

STREET LIGHTING,
CABLING FOR MACHINERIES



SHORT LIST OF COMPLETED PROJECTS

KNAUF

KNAUF

AIR COMPRESSOR CABLE LAYING
EMERGENCY SIREN SYSTEM



RAK PORTS

RAK PORTS

ELECTRICAL WORK FOR
FOOD PROCESSING FACILITY
BUILDING AT SAQR PORT

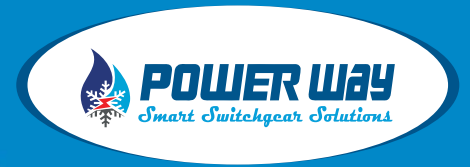
 **Boskalis**

BOSKALIS

PORTABLE CONTAINER
MEP WORKS FOR VESSELS, PUMPS



Our Sister Company



POWER WAY

ELECTRICAL PANELS ASSEMBLING



**THE COMPLETE SOLUTION IN
POWER DISTRIBUTION AND CONTROLS**

About Us

Power Way Electrical Panels Assembling is a division of the reputed “**POWER WAY Electro Mechanical Contracting**” based in Ras Al Khaimah. We spread our wings to the new horizons of the United Arab Emirates power distribution sector. As market leaders in electrical distribution supporters in the domestic, commercial and industrial sectors, we pride ourselves on the relationships we have established with our long-term and repeat business customers. These relationships have been built over many years of quality and reliable service. By taking the time to understand our customer’s individual requirements we ensure we provide them with the best solution based on our technical knowledge and experience. Our superior project performance, professionalism and stability is evidenced by our bond rating, which is one of the best in the industry. We are put our mile stones through the years of business along with our satisfied customers.

We are specialized in LV power distribution systems such as MDBs, Capacitor Banks, ATS Panels. In control panels we are providing tailor made designs of Motor Control Centers, VFD & Soft Starters, Pump Control Panels, and control console tables. From design to delivery we committed to satisfy our customers with quality and reliability. Our products are designed to the highest level of technical standards and aimed to safety of our customers and consumers the only and one concern to us. By using the well known brand’s products we assure our consistency in product quality and durability.

We work with



Our Product

MDB

Form II, III and Form IV
 Rating: 630Amp to 3200Amp
 Front or Rear access type construction
 Ample cabling space for easy connections
 Top and bottom cable entry
 Protection rating: IP 54
 Ambient temperature rating : 50°C



TECHNICAL DATA

INCOMER: ACB - 3 or 4Pole, 630A to 3200A, 50 to 65kA, Fixed or draw out manual or motor operated.
 MCCB - 3 or 4Pole, 630 to 1600A, 50kA, fixed or plug-in type, manual or motor operated.
BUS COUPLER: ACB or MCCB as above, Fixed or draw out, manual or motor operated.
 MCCB - 3 or 4Pole, 630 to 1600A, 50kA, fixed or plug-in type, manual or motor operated.
OUTGOINGS: ACB or MCCB as above, 3 or 4Pole, up to 1600A, 36 to 50kA.
BUS BAR: H.C.H.D. copper, tinned, insulated and color coded
ENCLOSURE: Electro galvanized sheet steel 2mm, powder coated, removable rear covers, extendable on side.

SMDB

Rating: Up to 800Amp
 Ample cabling space for easy connections
 Top, bottom and side cable entry
 Protection rating: IP 65
 Ambient temperature rating: 50°C



TECHNICAL DATA

INCOMER: MCCB 100A to 800A, 3 Pole, 15 to 50kA, with / without external rotary handle. **OUTGOINGS:** MCCB 30A to 630A, 15 to 50kA, 3 Pole
BUS BAR: H.C.H.D. copper, tinned, insulated and color coded
ENCLOSURE: Electro galvanized sheet steel, powder coated, suitable for floor or and wall mounting.

Our Product

Capacitor Bank

- With automatic PF regulator
- With or without harmonic -filters
- Standard sizes according to capacitor ratings
- Stand alone units for safety purpose
- Capacitor fitted with protection caps Temperature controlled
- Standard fixing for increased air circulation Ambient temperature rating



TECHNICAL DATA

- INCOMER:** Isolator or 40 to 1250 Amp 30 to 50 with /without external door handle
- OUT GOING:** HRC Fuses as per standard, 100 kA
- BUS BARS:** H.C.H.D. copper, tinned, rated for 50 kA short circuit
- CONTACTORS:** Special contactors rated according to the sizes of capacitors with damping resistance for the inrush current
- CAPACITORS:** Equipped with advance technology capacitors for over voltage of 450V mounted in upright position
- REGULATOR:** Programmable microprocessor based PFR to allow compensation of low low line voltage.

DB

- Final DBs Flush or Surface mounted type
- Assembled according to the specification and requirements
- Top, bottom and side cable entry
- Ambient temperature rating 50°C



TECHNICAL DATA

- INCOMER:** Isolator 40 to 160A, 3Pole or 4Pole with / without extended door handle
- OUTGOINGS:** ELCBs 25A to 125A, 30mA to 300mA, 2P/4Pole MCBs 6 to 63A, 1P/2P/3P, 6 to 10 kA
- BUS BAR:** 100/63Amp rated 1P/2P/3P/4P comb bus bar.
- ENCLOSURE:** Electro galvanized sheet steel, powder coated

Motor Control Centre

INCOMER: MCCBs Fixed or Draw out type
OUTGOINGS: ELCBs, MCBs, Contactors, O/Ls, Motor Protection relays
CONTROLS: Programmable Logic Controls or Intelligent MP Relays
 Manual and Auto operations based with relay or PLC controllers
 Power regulated with VFD / Soft Starters



TECHNICAL DATA

INCOMER: Isolator or MCCB
OUT GOING: ELCBs, MCBs
BUS BARS: Load rated comb bus bar or rated insulated wires.
CONTACTORS: Special contactors rated according to the sizes of capacitors with damping resistance for the inrush current
CAPACITORS: Equipped with advance technology capacitors for over voltage of 450V mounted in upright position
REGULATOR: Programmable microprocessor based PFR to allow compensation of low

Control Panel

TECHNICAL DATA

Application Standard : IEC 60439-1
 Insulation Voltage : up to 690V AC
 Rated Operational Voltage : 415V AC,3 Ph
 Frequency : 50 Hz.
 Bus bar Current : up to 250A
 Bus bar Short Circuit : 36KA
 Application : FCU, LIGHTING, & EF
 Ambient temperature : 50°C
 IP Protection : IP 41/54
 Paint Color : RAL 7032 / 7035
 Form of Construction : Form – I



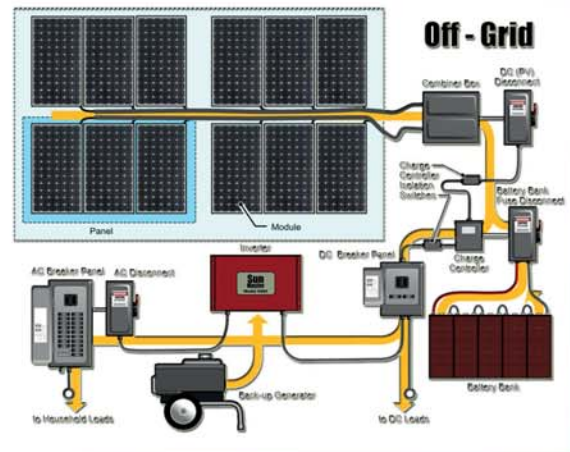
Our Product

Solar Energy System

Off-grid solutions - Roof top or Ground - based standalone solutions designed to ensure energy independence of residential and commercial sector to reduce dependence on Public Electricity Grid. *Solar Street & Highway Lighting *Solar Traffic Lights *Solar Water Desalination *Solar Water Pumping *Solar Water Treatment *Solar Water Heating

TECHNICAL DATA

Based on customer's demand we provide project initial concept design through studying and observing on site.



Meter Cabinet n' Feeder Pillars

TECHNICAL DATA

Specification according to local authority specification and regulations

Approved by Federal Electricity and Water Authority Dept.GRP / Weather Proof GI metal enclosure as per specified size.







POWERWAY ELECTRO MECHANICAL CONTRACTING

Ras Al Khaimah, United Arab Emirates
Mob: +971 56 838 9996
Tel: +971 7 235 6848
Fax: +971 7 235 6818
E-mail: mohammed@pwec.ae



POWERWAY ELECTRICAL PANELS ASSEMBLING

Ras Al Khaimah, United Arab Emirates
Mob: +971 50 449 2283,+971 50 449 2289
Tel: +971 7 2213975
Fax: +971 7 235 6818
E-mail: switchgear@pwec.ae